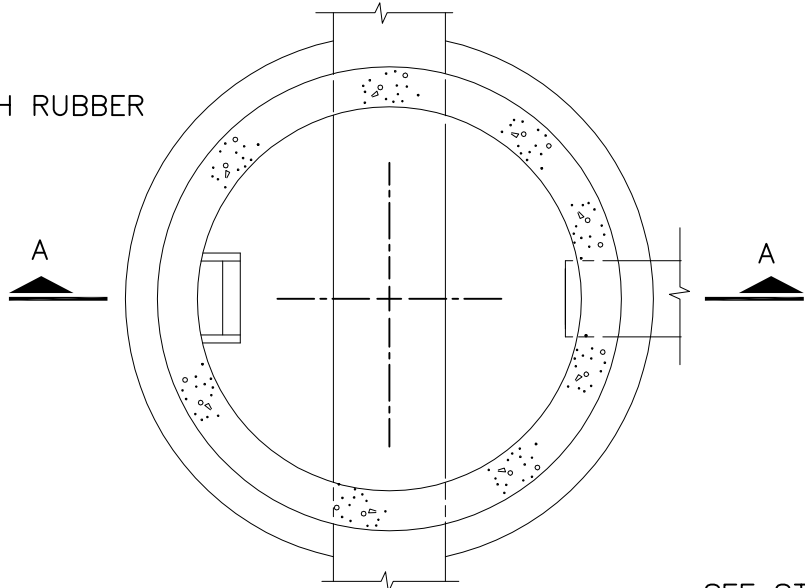


PRE-CAST CONCRETE MANHOLE

1. SECTIONS SHALL MEET ASTM C478.
2. ALL JOINTS MADE WATERTIGHT WITH RUBBER GASKET JOINTS
3. CONE TO BE ECCENTRIC TYPE
4. ALL MANHOLE COMPONENT PARTS SHALL HAVE THE NAME OF THE MANUFACTURER STENCILED ON THE INSIDE. THE LETTERING SHALL BE A MINIMUM OF 4" HIGH.



SECTION B-B

SEE STRUCTURE SCHEDULE FOR TYPE OF FRAME

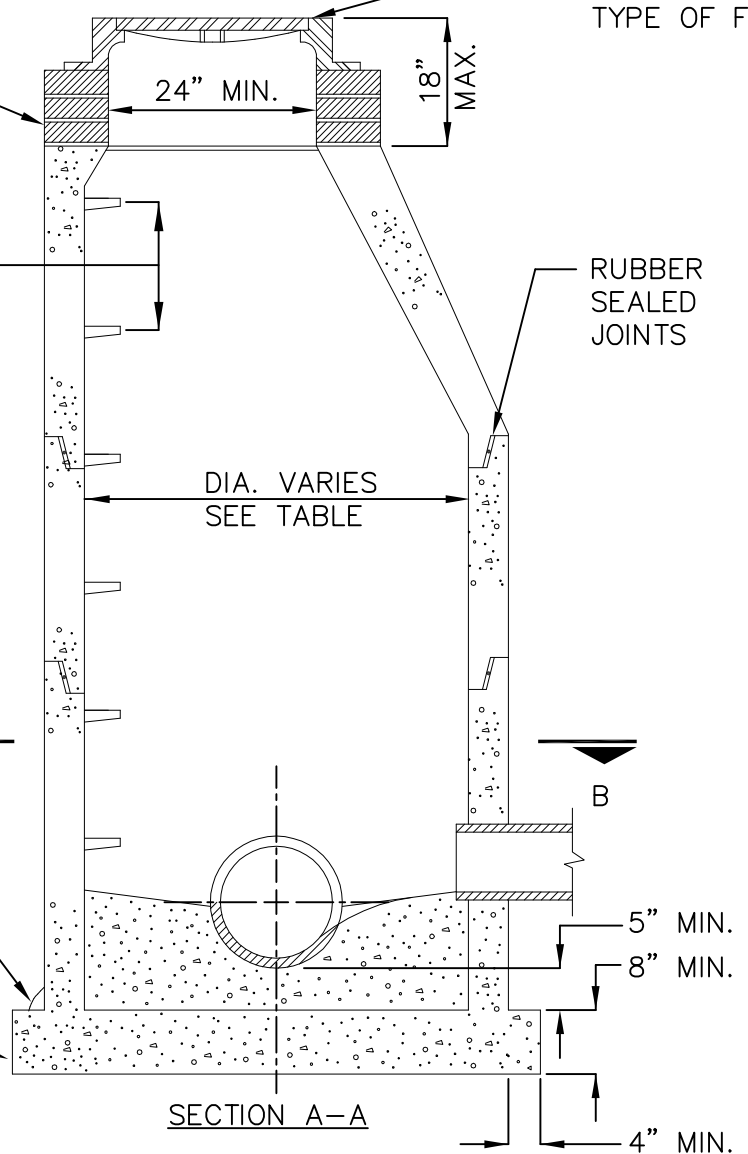
MANHOLE BRICKS FOR GRADE ADJUSTMENT.

MANHOLE STEPS
16" MAX ON CENTER

PIPE SIZE	MANHOLE DIAMETER
12"–24"	4'–0" MIN.
30"–36"	5'–0" MIN.
42"–48"	6'–0" MIN.

FOR PRECAST BOTTOM USE MORTAR AS INDICATED

PRECAST BOTTOM OR POURED IN PLACE BOTTOM SHALL BE 3000 PSI, 28 DAY STRENGTH CONCRETE W/4X4 WIRE MESH.



SECTION A-A

STORM SEWER MANHOLE