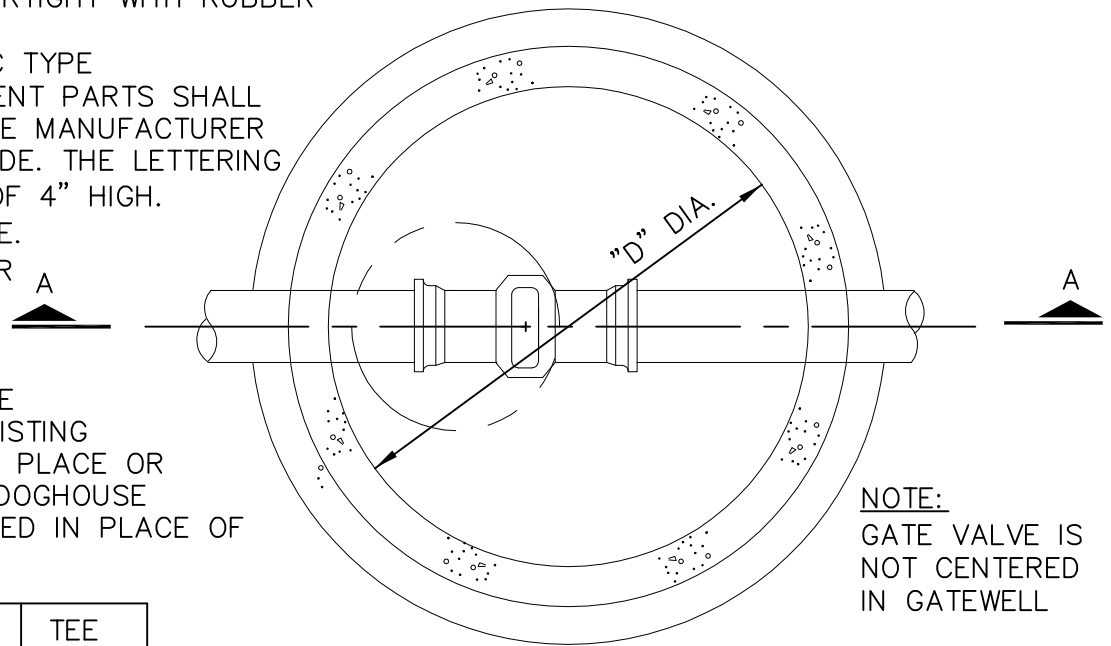


PRE-CAST CONCRETE MANHOLE

1. SECTIONS SHALL MEET ASTM C478.
2. ALL JOINTS MADE WATERTIGHT WITH RUBBER GASKET JOINTS
3. CONE TO BE ECCENTRIC TYPE
4. ALL MANHOLE COMPONENT PARTS SHALL HAVE THE NAME OF THE MANUFACTURER STENCILED ON THE INSIDE. THE LETTERING SHALL BE A MINIMUM OF 4" HIGH.
5. PROVIDE INTEGRAL BASE.
6. KOR-N-SEAL BOOTS OR APPROVED EQUAL TO BE INSTALLED AT PIPE PENETRATIONS.
7. WHERE GATE WELLS ARE CONSTRUCTED OVER EXISTING WATERMAIN, POURED IN PLACE OR PRECAST COOKIE AND DOGHOUSE STRUCTURES MY BE USED IN PLACE OF INTERGRAL BASE.



NOTE:
GATE VALVE IS NOT CENTERED IN GATEWELL

STRAIGHT THRU	TEE	
VALVE SIZE	"D"	"D"
8"	5'-0"	6'-0"
12"	5'-0"	6'-0"
16"	6'-0"	6'-0"

SECTION B-B

FRAME SET IN MASTIC AND BOLTED TO PRECAST

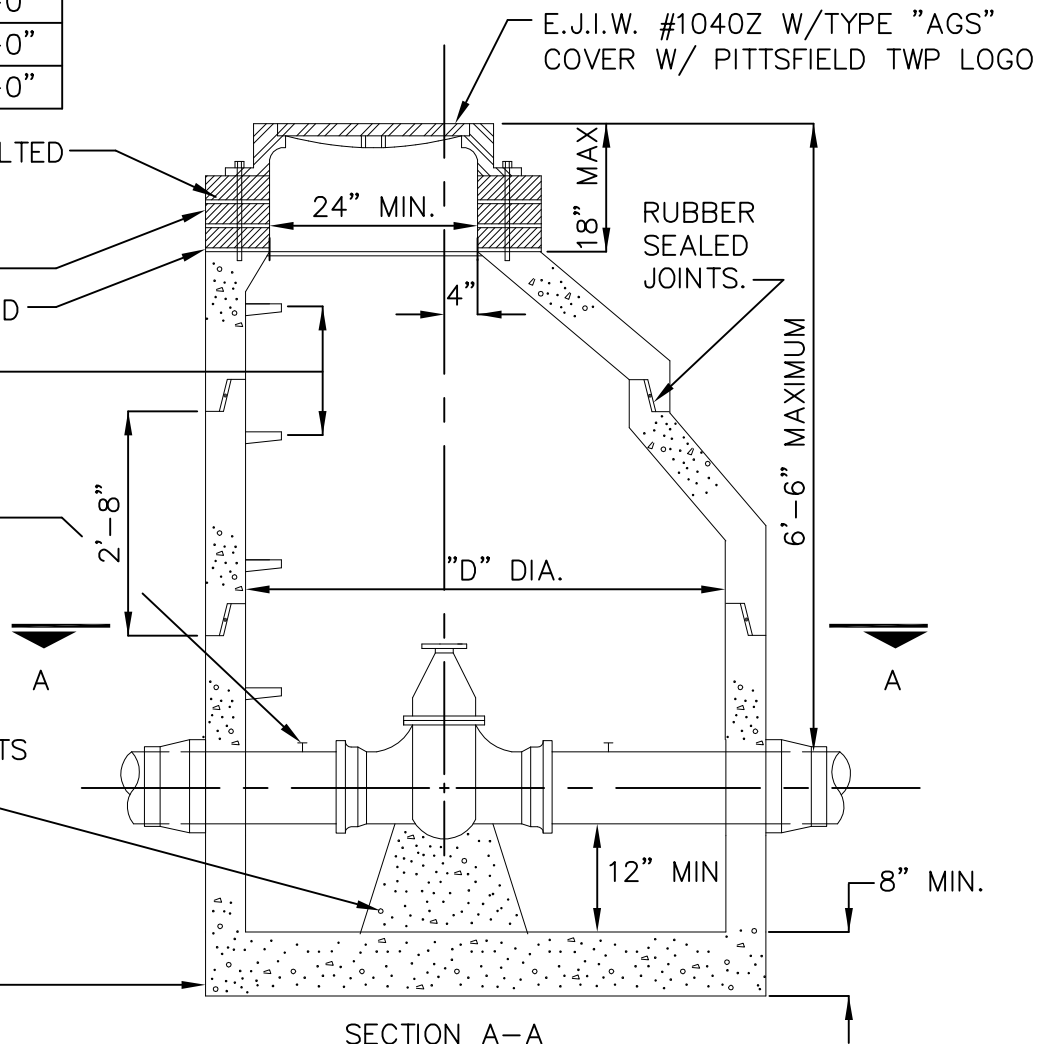
HDPE ADJUSTMENT RINGS FOR GRADE ADJUSTMENT.

MANUFACTURER'S RECOMMENDED SEALANT BETWEEN RINGS. STEPS 16" MAX. ON CENTER

TWO 1" CORPORATION STOPS, ONE EACH SIDE OF VALVE AS DIRECTED USE APPROVED BALL TYPE CORPORATION.

POURED 3000 PSI, 28 DAY STRENGTH CONCRETE VALVE SUPPORT, KEEP BOLTS & JOINTS CLEAR OF CONCRETE

PRECAST INTEGRAL BASE



SECTION A-A

STANDARD GATE VALVE & WELL