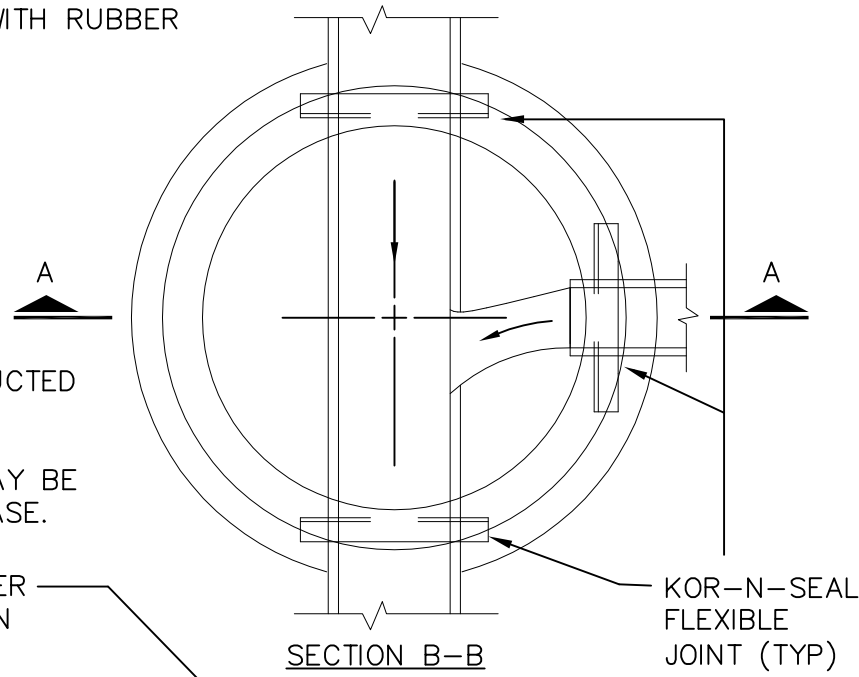


PRE-CAST CONCRETE MANHOLE

1. SECTIONS SHALL MEET ASTM C478.
2. ALL JOINTS MADE WATERTIGHT WITH RUBBER GASKET JOINTS
3. CONE TO BE ECCENTRIC TYPE
4. ALL MANHOLE COMPONENT PARTS SHALL HAVE THE NAME OF THE MANUFACTURER STENCILED ON THE INSIDE. THE LETTERING SHALL BE A MINIMUM OF 4" HIGH.
5. PROVIDE INTEGRAL BASE WITH PRECAST CONCRETE CHANNELS.
6. WHERE MANHOLES ARE CONSTRUCTED OVER EXISTING SEWERS, POURED IN PLACE OR PRECAST COOKIE AND DOGHOUSE STRUCTURES MAY BE USED IN PLACE OF INTEGRAL BASE.



E.J.I.W. #1040 W/TYP "AGS" COVER
W/"ANN ARBOR TWP. SANITARY" IN
RAISED LETTERS

FRAME SET IN MASTIC AND BOLTED
TO PRECAST

HDPE ADJUSTMENT RINGS
FOR GRADE ADJUSTMENT

MANUFACTURE'S RECOMMENDED
SEALANT BETWEEN RINGS.
STEPS 16" MAX ON CENTER

WHERE PRECAST CHANNELS
ARE NOT POSSIBLE,
CHANNEL TO BE 3000 PSI CONCRETE
POURED AS SHOWN AND TROWELED

ALL CHANNELS TO BE FULL DEPTH.

PRECAST BOTTOM SHALL BE 3000
PSI CONCRETE WITH 4X4 WIRE MESH.

4" MIN

8" MIN.

SECTION B-B

KOR-N-SEAL
FLEXIBLE
JOINT (TYP)

24" MIN

18" MAX

4'-0" DIA
OR AS
NOTED

RUBBER
SEALED
JOINT

SEE PIPE
PENETRATION
DETAIL

KOR-N-SEAL
FLEXIBLE JOINT OR
APPROVED EQUAL.

FOR BUILDING
SERVICE LEADS
ONLY



B



B

12"

5" MIN

SECTION A-A

SANITARY MANHOLE