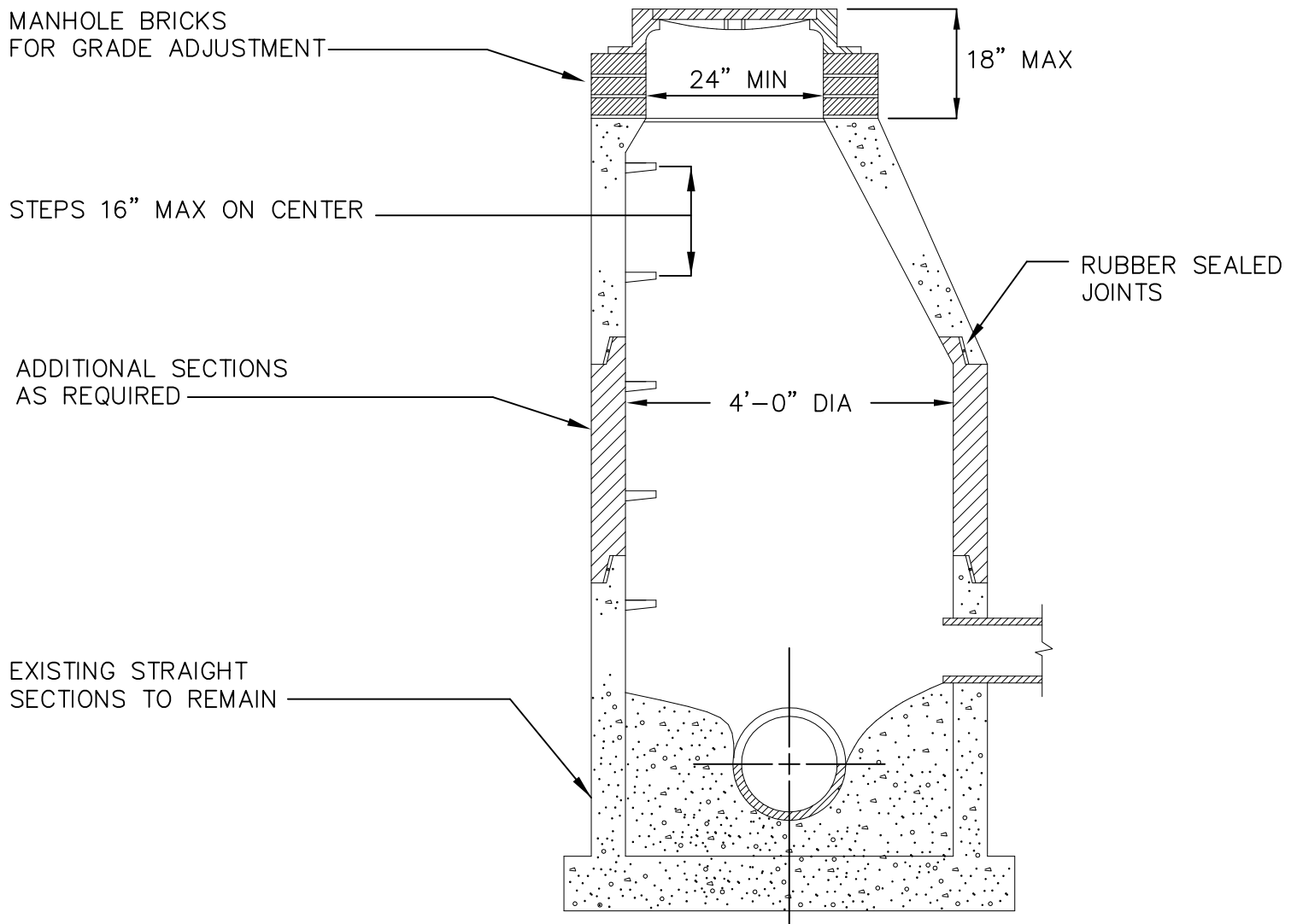


NOTES:

1. SECTIONS SHALL MEET ASTM C478.
2. ALL JOINTS MADE WATERTIGHT WITH RUBBER GASKET JOINTS
3. REMOVE CONE, ADD STRAIGHT SECTIONS AS REQUIRED AND REPLACE CONE
4. ADD MANHOLE STEPS AS NECESSARY
5. ADD ADJUSTMENT RINGS FOR RIM GRADE ADJUSTMENT



MANHOLE & CATCH BASIN
RECONSTRUCTION DETAIL