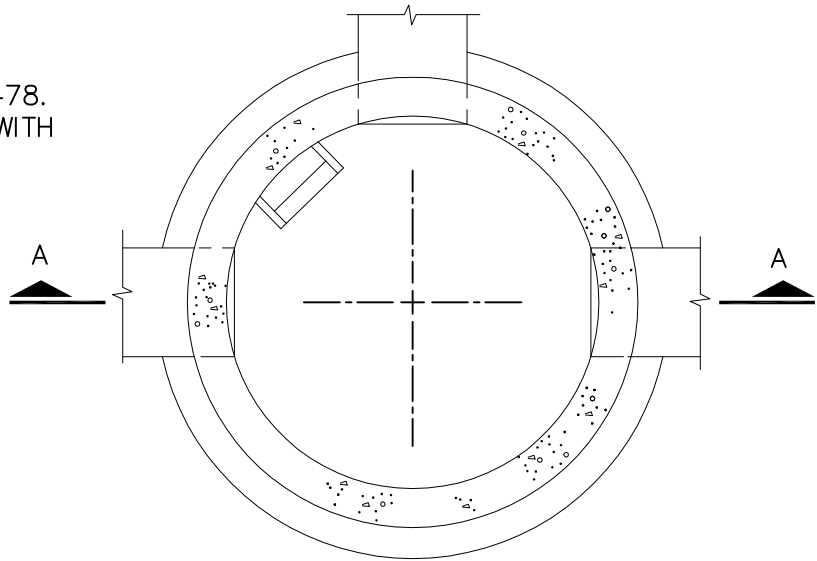
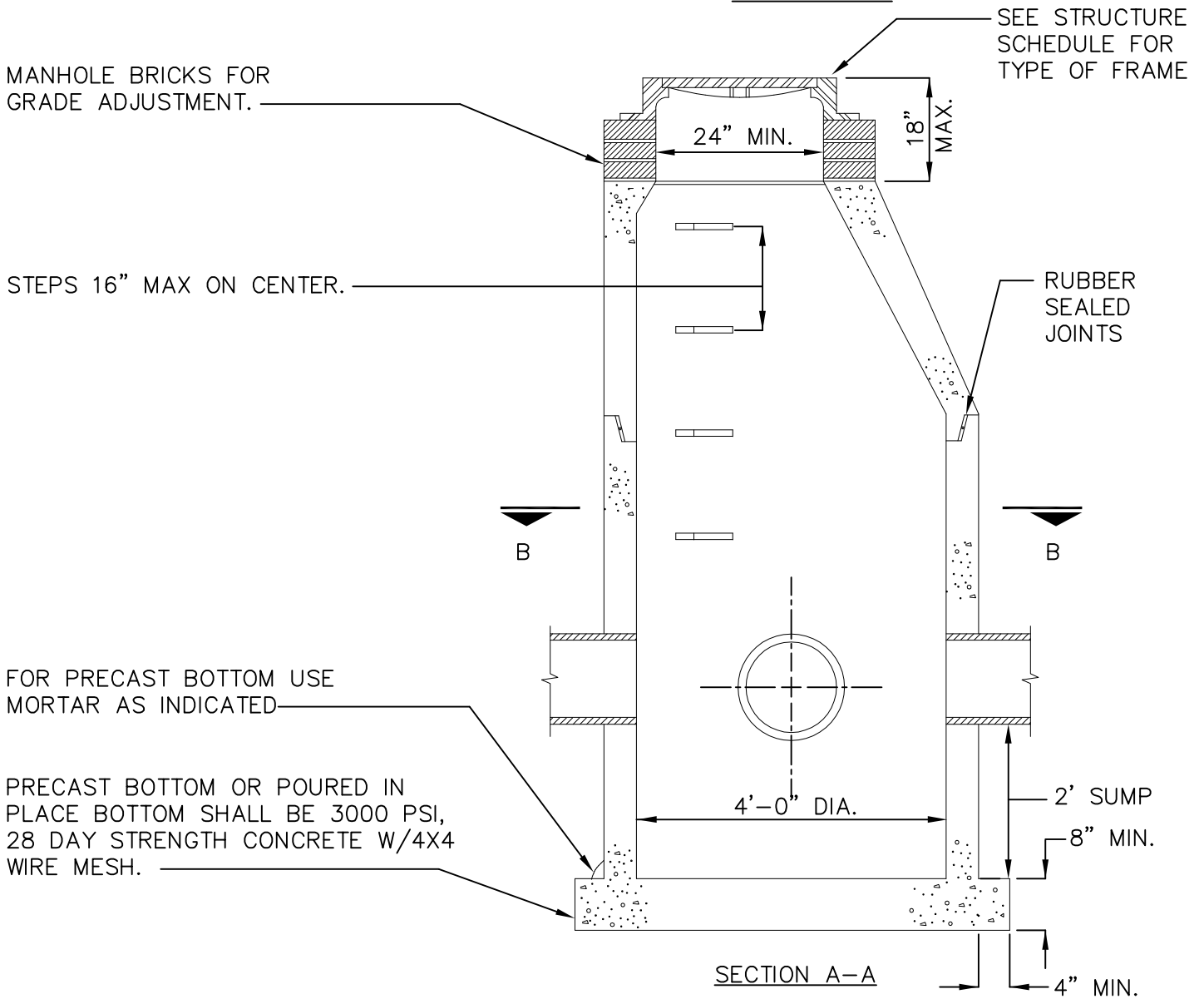


PRE-CAST CONCRETE MANHOLE

1. SECTIONS SHALL MEET ASTM C478.
2. ALL JOINTS MADE WATERTIGHT WITH RUBBER GASKET JOINTS.
3. CONE TO BE ECCENTRIC TYPE
4. ALL MANHOLE COMPONENT PARTS SHALL HAVE THE NAME OF THE MANUFACTURER STENCILED ON THE INSIDE. THE LETTERING SHALL BE A MINIMUM OF 4" HIGH.



SECTION B-B



4' DIAMETER CATCH BASIN