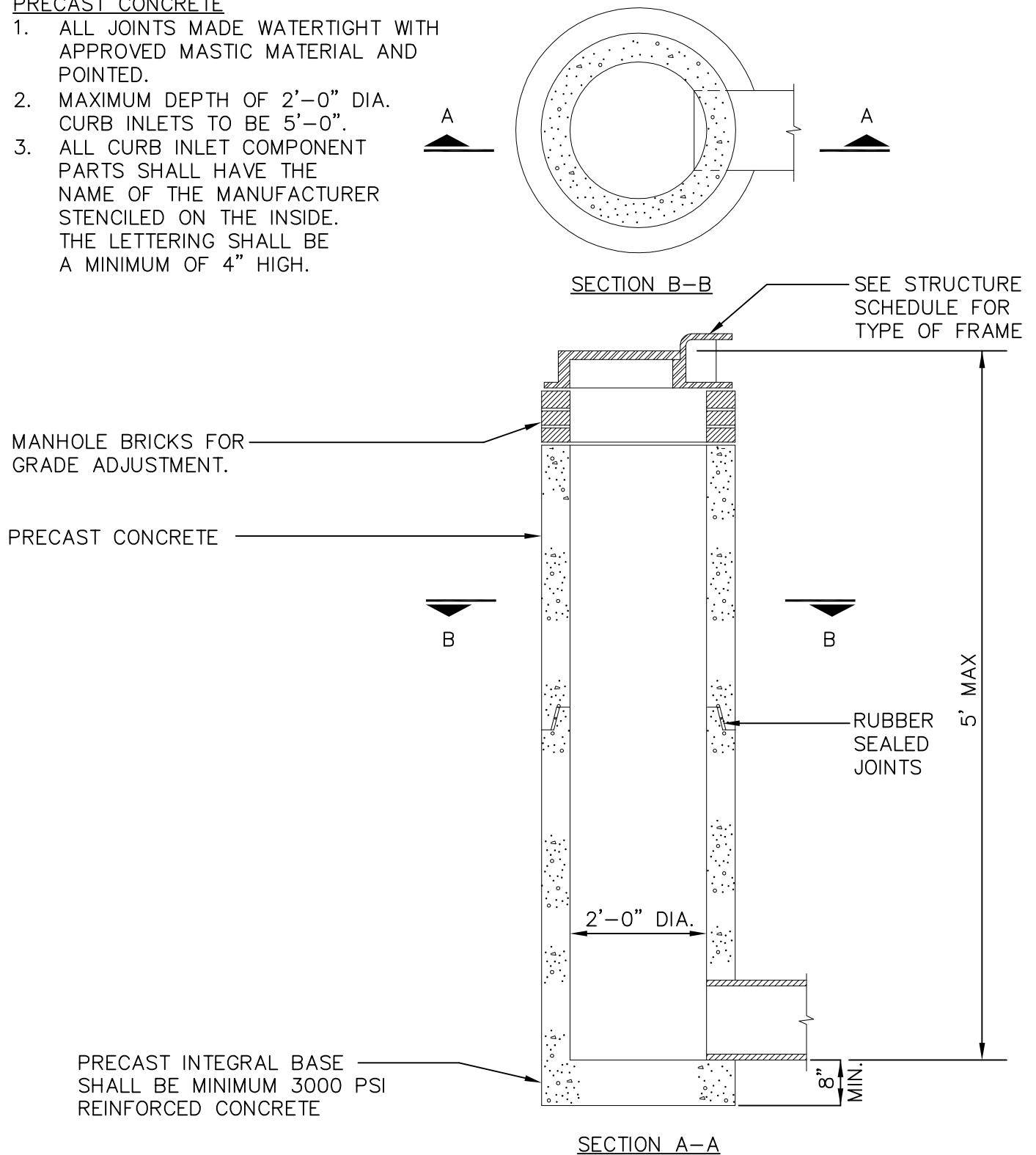


PRECAST CONCRETE

1. ALL JOINTS MADE WATERTIGHT WITH APPROVED MASTIC MATERIAL AND POINTED.
2. MAXIMUM DEPTH OF 2'-0" DIA. CURB INLETS TO BE 5'-0".
3. ALL CURB INLET COMPONENT PARTS SHALL HAVE THE NAME OF THE MANUFACTURER STENCILED ON THE INSIDE. THE LETTERING SHALL BE A MINIMUM OF 4" HIGH.



2' DIAMETER INLET